



CAPABILITY STATEMENT

THE ROTHSHIRE DIFFERENCE

We are a multi-disciplinary design consultancy. At Rothshire, our collaborative and open-minded approach to design puts our clients at the heart of everything we do.

Founded by people passionate about providing multi-disciplinary services to clients, we have grown into a company that employs experts across a wide range of traditional and emerging fields. The result is a client-focused team that prides itself on integrity in all our dealings and a constantly forward-thinking, innovative approach to all we do.

Our strength in problem-solving, providing results far exceeding expectations and never walking away from a challenge fosters a relentless approach to design; this philosophy runs throughout the whole business and is a core value of our company.



'Providing a light of knowledge to last for generations'

F A C A D E

Façade engineering design is the science of balancing performance, strength, durability, cost, and sustainability concerns whilst preserving architectural distinction, to achieve the effective enclosure of a building, and prevent water ingress that could cause a loss of amenity or result in undue dampness and deterioration to habitable spaces.

Since the introduction of the Design and Building Practitioners (D&BP) Act 2020 (NSW), Rothshire has been providing façade design services for a range of residential and commercial developments in New South Wales (NSW), with a total value of over \$2 billion. Projects include:

- 26 storey residential tower in Norwest
- 6 joint multi-residential apartment buildings in Rouse Hill
- 11 storey multi-residential building in Auburn
- 16 storey mixed-use residential development in Wollongong
- 7 storey residential/ commercial building in Dee Why
- 11 storey united residential development in Kogarah

Our engineers are experts in the emerging field of façade engineering, with combined skills and experiences from structural engineering, remediation, and architecture; our team can provide end to end solutions including CFD analysis, critical stage inspections, and façade diagnostics and testing.

KEY SERVICES

ROTHSHIRE FAÇADE CAPABILITIES INCLUDE:

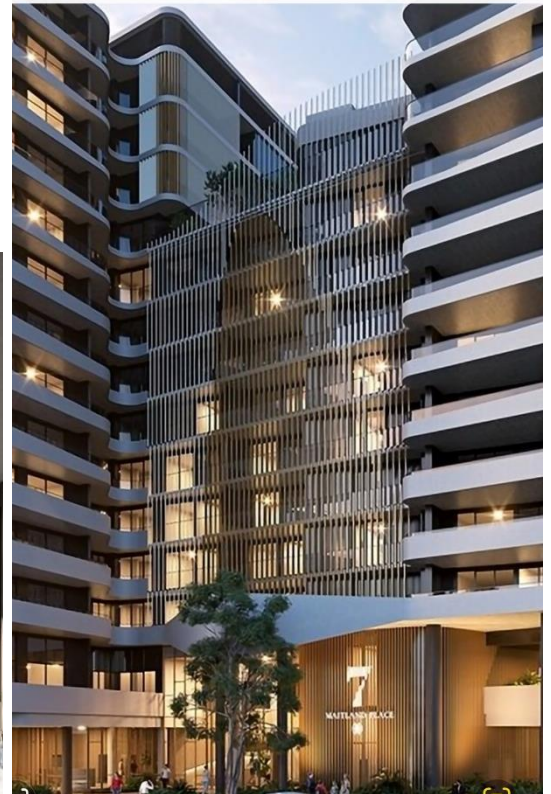
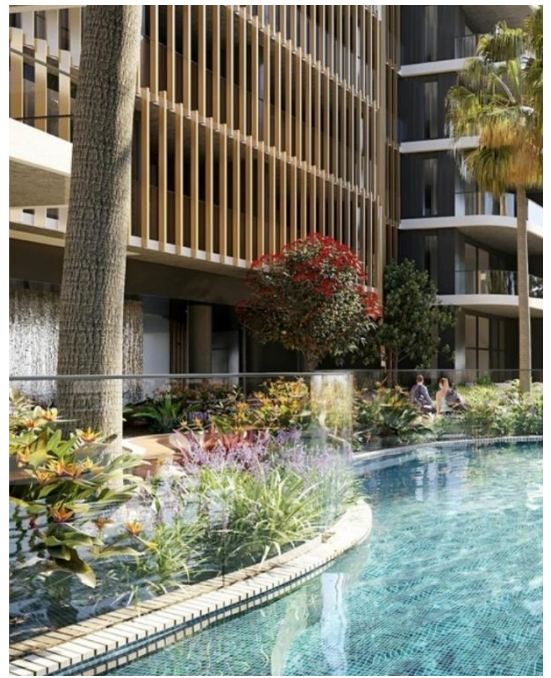
- Site wind analysis
- Water and weatherproofing design/detail check
- Cladding and fixing design
- Steel, aluminium, and timber façade design
- Masonry and stone cladding design
- Glass design
- Curtain wall design
- Frameless glass design
- Computational Fluid Dynamic (CFD) modelling
- Thermal performance design checks
- Façade material selection
- Forensic engineering
- Remedial engineering design

26 STOREY RESIDENTIAL TOWER

NORWEST | NSW | 2153

Rothshire was engaged to provide façade review and design for the Infinity Park Residential project. The development works extend to two smaller low-rise buildings, as well as a larger three-part, 26 storey united building, combining for 288 units in total.

Rothshire has been heavily engaged in the design of all the balustrades and the extensive aluminium screen veil which wraps the sweeping curves of the building. The united building is clad with a proprietary aluminium cladding system which has been envisioned, specified, and designed, and tested with Rothshire's leadership in design.



6 JOINT MULTI-RESIDENTIAL APARTMENT BUILDINGS

ROUSE HILL | NSW | 2155

Rothshire worked on the façade review for Stage B of the Villa De Ma Ill project in Rouse Hill, comprising six luxury multi-residential apartment buildings, for a total of 116 units.

Rothshire provided guidance and design for critical wall junctions and solutions for cladding in higher pressure areas. Our expert wind assessment and architectural critique has helped to ensure that the developer's standards of high quality, sustainability and innovation can be delivered.



11 STOREY MULTI-RESIDENTIAL BUILDING

AUBURN | NSW | 2144

Rothshire completed a façade review of the multi-residential Grand Auburn, comprising 11 storeys and a total of 116 units.

Rothshire was engaged throughout the project and advised in the architectural review, including weatherproofing of critical junctions between different claddings. Our expertise allowed us to provide guidance for complicated issues surrounding thermal compliance, fire, and conformance to the BCA.



16 STOREY MIXED-USE RESIDENTIAL DEVELOPMENT

WOLLOGONG | NSW | 2500

Rothshire has been heavily involved in the façade and structural design for the mixed-use residential development, Eclipse Wollongong.

Rothshire notably provided structural design and assessment for the bespoke curved blades, cantilevered building supports, and floor-to-ceiling glass throughout the building.

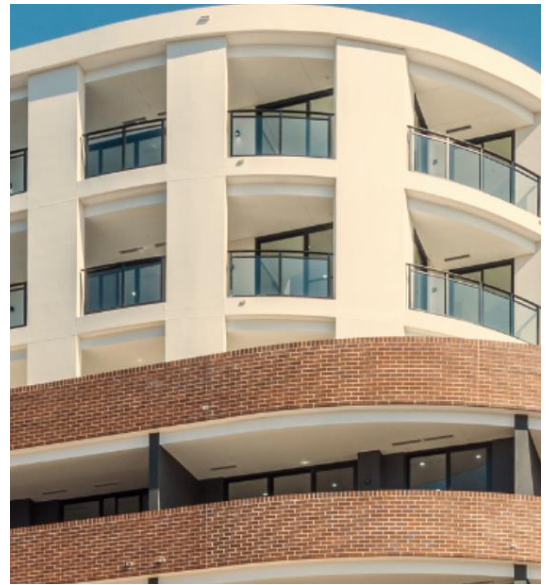


7 STOREY RESIDENTIAL/ COMMERCIAL BUILDING

DEE WHY | NSW | 2019

Rothshire was engaged in the façade review and design of The Delmar. This mixed-use building combined multiple cladding types across the “inside out” floor plate design and 71 units.

Rothshire undertook design and testing for the ancillary elements including the aluminium glazed balustrades and louvres.



11 STOREY UNITED RESIDENTIAL DEVELOPMENT

KOGARAH | NSW | 2217

Rothshire was engaged for façade review and design for an eleven storey united building, Victoria & George, totalling 173 units. Bespoke design of windows and cladding in high pressure zones was undertaken and specified to complete the building to a high weatherproofing standard. Rothshire also provided remedial and structural design for the integration of two heritage units into the new superstructure, utilising the team's knowledge in timber design, masonry, and investigation works.



C O N T A C T

DETAILS



NEW SOUTH WALES

PO Box 941
Chatswood NSW 2057

Suite 202
845 Pacific Highway
Chatswood
NSW
2067

Level 2
219 George
St, Liverpool
NSW
2170

TASMANIA

PO Box 97
Sandy Bay, TAS 7006

Ground Floor
162 Macquarie
St, Hobart
TAS
7000

1300 076 847
enquiries@rothshire.com.au
www.rothshire.com.au